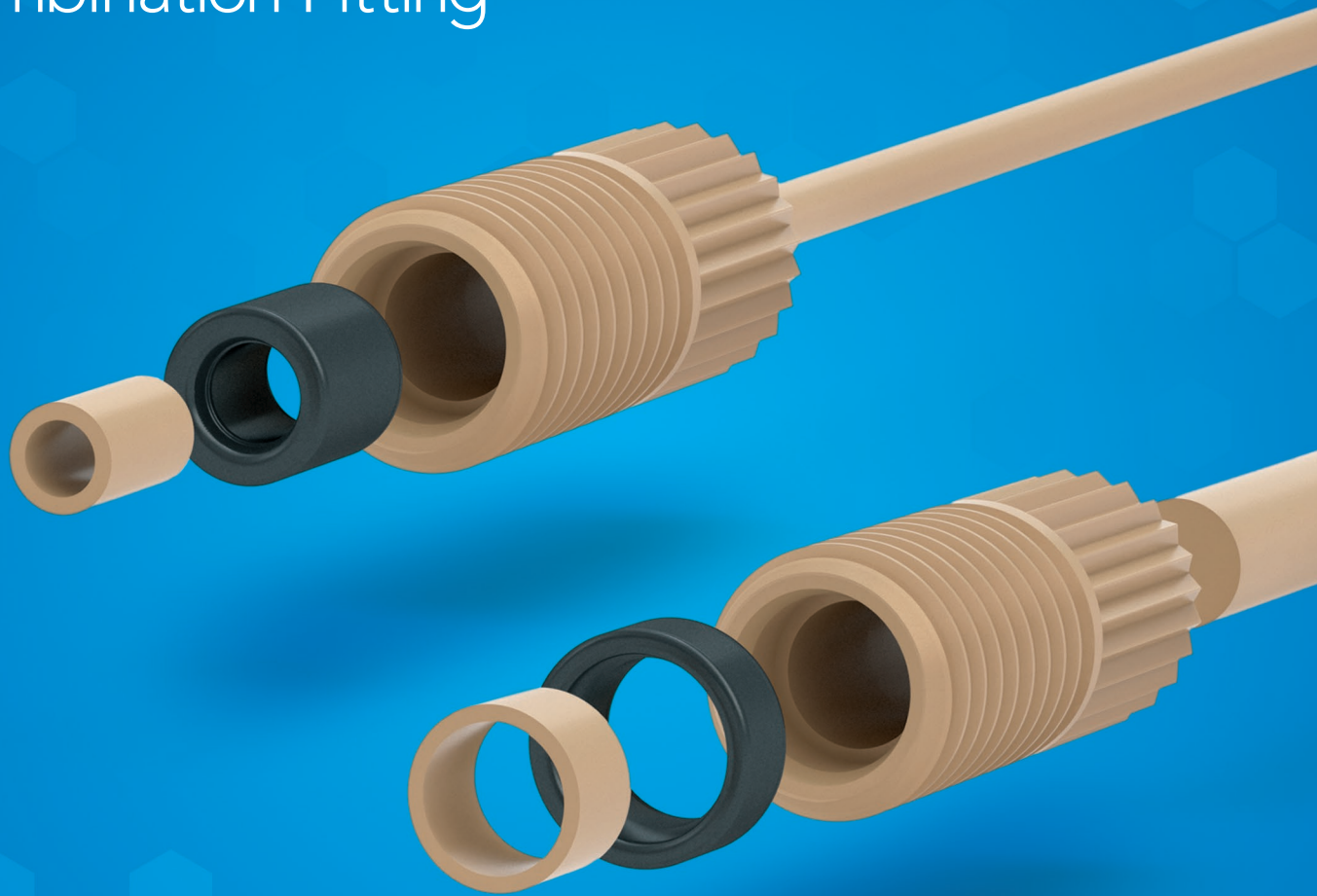


BioTight®

Press-Fit Ferrule and Lock Ring
Combination Fitting



BioTight®

EASY TO USE · COMPACT · VERSATILE · METAL-FREE

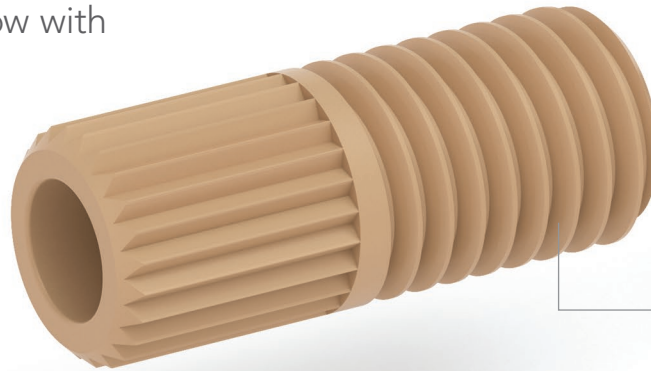
Do you struggle to source easy-to-use fittings suitable for low-pressure applications in confined spaces?

For those navigating the world of low-pressure applications, the struggle ends with BioTight® from IDEX Health & Science. Our user-friendly fitting streamlines your workflow with reliability in every connection.

BioTight® LP-125
Press-fit Ferrule and Lock Ring
Combination Fitting System



BioTight®
LP-336
Universal
Fitting



BIOTIGHT® IS
IDEAL FOR LOW-
PRESSURE FLUIDIC
APPLICATIONS
IN BIO MARKETS
INCLUDING...



SPATIAL
BIOLOGY



NEXT
GENERATION
SEQUENCING



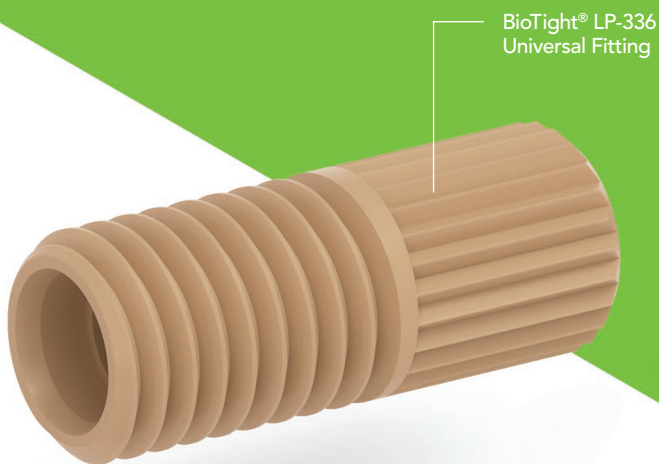
IVD BIO



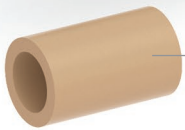
CHROMATOGRAPHY



GENOMICS



BioTight® LP-336
Universal Fitting



BioTight® LP-062 Press-fit Ferrule and
Lock Ring Combination Fitting System

Benefits & Features of BioTight®

Ideal for Tight Spaces

BioTight® can navigate spaces other fittings can't reach. With a sleek, low-profile design, it offers an unrivaled finger-tight solution for confined spaces, ensuring ease and precision.

Easy-to-Use

BioTight® fittings redefine simplicity with a press-fit design, eliminating the need for high-torque seals. See BioTight® in action and learn how to assemble by visiting www.idex-hs.com/BioTight.

Suited for Low-Pressure

With a seal you can trust, BioTight® is ideal for low-pressure applications, rated up to 100 psi for 1/8" outer diameter tubing and 200 psi for 1/16" outer diameter tubing.

Versatile

Engineered for adaptability, BioTight® fittings integrate effortlessly into a broad spectrum of low-pressure fluidic systems to amplify your bio-market applications.

Metal-Free

Made with all PEEK components, BioTight® fittings offer metal-free integrity to ensure chemical and biological compatibility for sensitive applications.

Consistent Performance

BioTight® fittings go beyond expectations, consistently setting a new benchmark for performance, reliability, and efficiency.

Discover the Full Potential of BioTight® Combination Fittings at www.idex-hs.com/BioTight

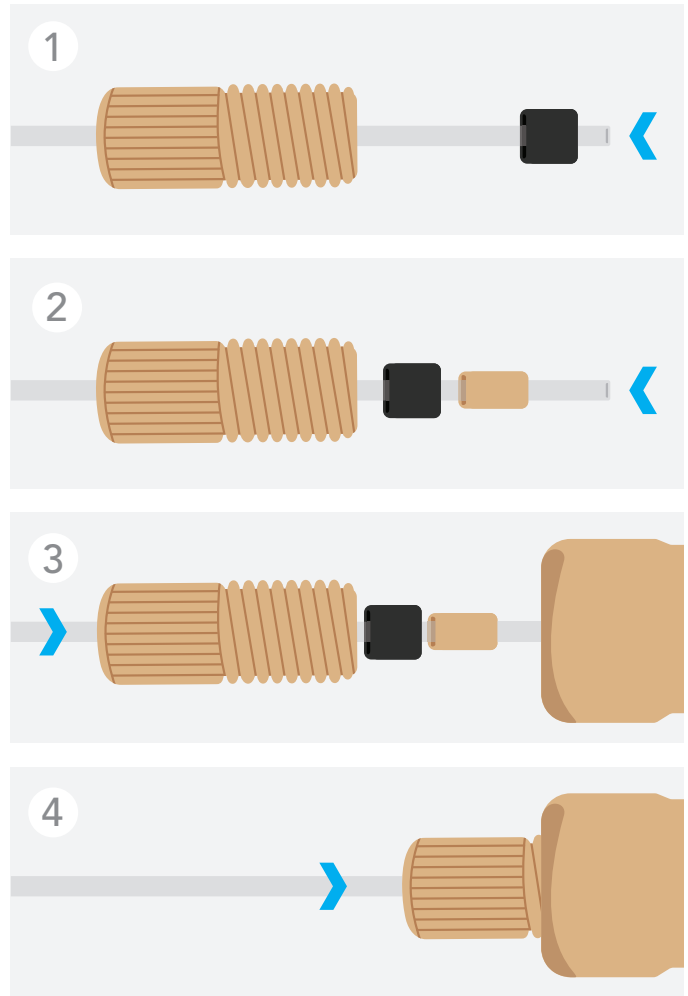
Operating Instructions

BioTight® is as straightforward to assemble as it is to use. Just follow these simple steps:

- 1 Slide the fitting onto your tubing and add the black-colored lock ring, ensuring the ridge feature faces the fitting for 1/8-inch tubing.
- 2 Slide the ferrule tube onto your tubing.
- 3 Next, place the components into your intended port, inserting the port thread into the fitting while keeping pressure on the tube.
- 4 Continue until you feel the lock ring bottom-out in the port. It's that simple.

BIOTIGHT® PRODUCT PART NUMBERS

LP-125	BioTight® Ferrule and Lock Ring 1/8"
LP-062	BioTight® Ferrule and Lock Ring 1/16"
LP-336	BioTight® Universal Fitting



BIOTIGHT® SPECIFICATIONS

Rated Working Pressure	LP-062: 200 psi LP-125: 100 psi
Working Port	¼-28 Flat Bottom, IDEX Health & Science Standard Depth, Metal and Polymer
Compatible Tubing	0.124" ± 0.003" OD Rigid Polymer 0.062 ± 0.001" OD Rigid Polymer
Compatible Fittings	LP-336 Specialized Fitting (Headless)
Fitting Size	Shorter and Narrower Head Size than Other ¼-28 Fittings
Material Type	PEEK
Torque Required	Light Fingertight (<2 in. lbs.)
Over Torque	No Damage at 3 in. lbs.
Repeat Uses	>100
Assembly Method	Assembled by Customer or IDEX Health & Science (Manual or Port Swage)